

# T Series™

## Self-Priming Centrifugal Pumps



*The Pump People™*





# The World Leader in Solids Handling Self-Priming Pumps.

When industry looks for more reliable and efficient ways to move waste, they look to Gorman-Rupp self-priming centrifugal pumps. Gorman-Rupp has been manufacturing self-priming pumps since 1933. We have remained the standard by which all other pumps are judged.

Today, Gorman-Rupp T Series™ pumps are the world's leading choice for waste handling in such industries as steel and paper mills, deep mines, food processing plants, appliance and automotive factories, tanneries and wineries, and are also found in sewage handling applications in municipalities worldwide. That's because Gorman-Rupp pumps offer customers the performance, efficiency and reliability they can count on, day-in and day-out.

Our quality reputation has made Gorman-Rupp the world's leader in self-priming centrifugal pumps. And it makes us your best solution – meeting all of your industrial or municipal waste handling needs.

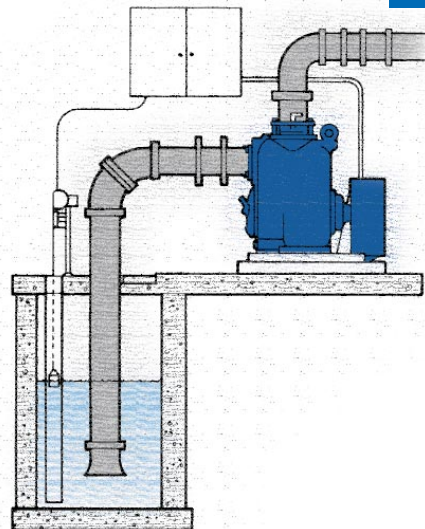




# Self-Priming—the Superior Solution, for Several Reasons:

## 1. High and dry mounting for fast and easy service and maintenance

Because Gorman-Rupp centrifugal pumps are self-priming, they can be mounted high and dry at floor level, with only the suction line down in the liquid. Service or maintenance can be performed quickly and simply with common hand tools and without having to pull the pump. There are no long drive shafts to install and align, no hoists or cranes required, and no need for service personnel to enter the sump.



## 2. Clogging is kept to a minimum, so downtime is virtually eliminated

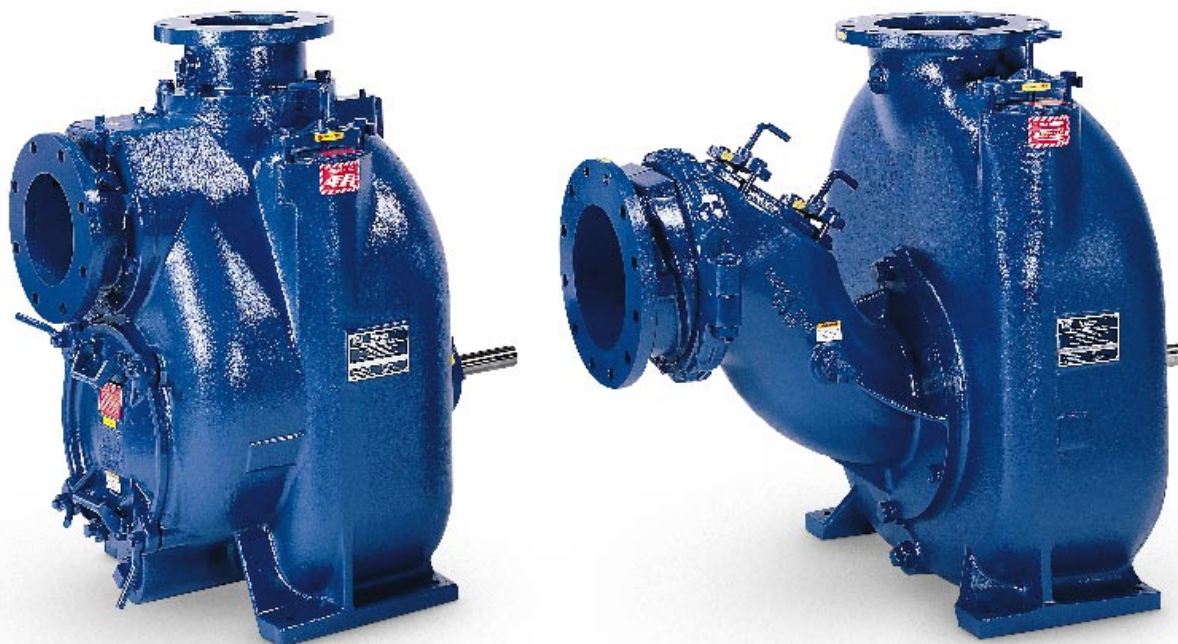
Gorman-Rupp solids handling, self-priming T Series™ pumps help keep productivity high because they are designed for virtually clog-free performance. Solids handling pump models will handle spherical solids up to 3" (76 mm) in diameter and allow solids to pass through the entire pump, not just the impeller. If a clog does occur, it can be eliminated quickly and easily by opening the coverplate, removing the clog, and returning the pump to normal operation, all in just a few minutes' time.

## 3. Service is simple, fast and economical

Our solids handling pump models are designed to make servicing a fast, simple and cost-efficient process. The removable coverplate allows for convenient inspection or service of the impeller, seal and wearplate, with no special tools required. If the pump shaft or bearings need service, the back pull-out design of this pump allows the entire rotating assembly to be removed without disturbing the pump casing or piping. Plus, the rotating assembly is sealed with an O-ring which permits external clearance adjustments.

## 4. Automatic priming means dependable performance

T Series™ self-priming pumps are a sensible solution for industry and municipalities because they require very little attention, resulting in significant savings of maintenance time and money. Properly applied and installed, and after an initial priming, Gorman-Rupp T Series™ pumps will continue to reprime automatically. In fact, T Series™ pumps will reprime with only a partially filled pump casing and a completely dry suction line.



# T Series™

## Solids & Corrosive Liquids Pumps



Gorman-Rupp T Series™ pumps are designed for economical, trouble-free operation in handling solids-laden liquids and slurries.

Pumps feature a large volute design which allows them to reprime automatically in a completely open system without the need for suction or discharge check valves. And they can do it with the pump casing only partially filled with liquid and a completely dry suction line.

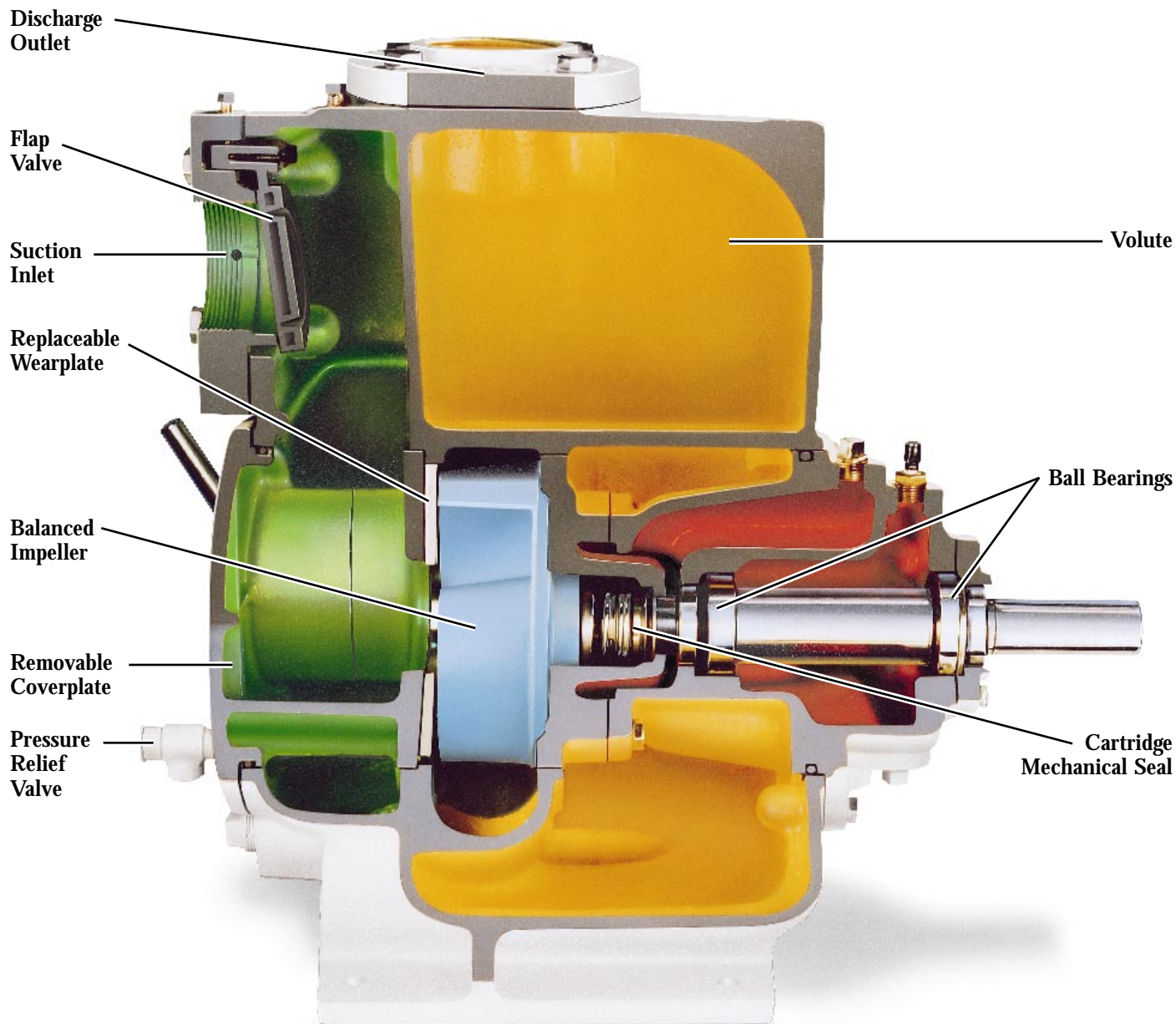
**Sizes:** 3", 4", 6", 8", 10" (75 mm, 100 mm, 150 mm, 200 mm, 250 mm)

**Materials of Construction:** Cast Iron, 316 Stainless Steel, CD4MCu, G-R Hard Iron

**Max. Capacity:** 3400 gpm (214 lps)

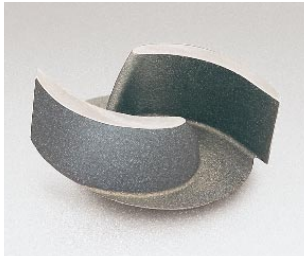
**Max. Head:** 130 ft. (39.6 m)

**Max. Solids:** 3" (76 mm)





# Features



## Solids Handling Impeller

Two-vane, semi-open solids handling impeller handles up to 3" (76 mm) diameter solids, depending on pump model. Pump out vanes on impeller shroud reduce foreign material buildup behind impeller and reduce pressure on seal and bearings.



## Exclusive Gorman-Rupp Cartridge Seal

Exclusive double-floating, self-aligning, oil lubricated mechanical cartridge seal with stationary and rotating face of silicon carbide is specifically designed for abrasive industrial service. Seal is available on 3", 4" and 6" (75 mm, 100 mm and 150 mm) pump models. Metal bellow seals are also available.



## Removable Coverplate and Wearplate

Removable coverplate and wearplate provides quick and easy access to pump interior without disconnecting piping. Clogs can be removed and pump returned to service in minutes. Impeller, seal, wearplate and flap valve can also be accessed through coverplate opening for inspection or service.



## Removable Rotating Assembly

Inspection of pump shaft or bearings is easily accomplished without disturbing pump casing or piping by removing rotating assembly. On most models, simply remove four bolts from the back of the pump and the assembly slides out.

## Fourteen High Performance Models To Choose From

### Pump Specifications

Pump Model	Size	Solids	Impeller	Wear Plate	Seal Plate	Shaft
T3A60-B	3" (75 mm)	2-1/2" (63.5 mm)	Ductile Iron	1020 Steel	Gray Iron 30	4140 Alloy Steel
T3A61-B	3" (75 mm)	2-1/2" (63.5 mm)	316 S.S.	316 S.S.	316 S.S.	17-4 PH S.S.
T3A65-B	3" (75 mm)	2-1/2" (63.5 mm)	CD4MCu	CD4MCu	CD4MCu	17-4 PH S.S.
T4A60-B	4" (100 mm)	3" (76.2 mm)	Ductile Iron	1020 Steel	Gray Iron 30	4140 Alloy Steel
T4A61-B	4" (100 mm)	3" (76.2 mm)	316 S.S.	316 S.S.	316 S.S.	17-4 PH S.S.
T4A65-B	4" (100 mm)	3" (76.2 mm)	CD4MCu	CD4MCu	CD4MCu	17-4 PH S.S.
T4B60-B	4" (100 mm)	1-1/2" (38.1 mm)	Gray Iron	Gray Iron	Gray Iron 30	4140 Alloy Steel
T4B61-B	4" (100 mm)	1-1/2" (38.1 mm)	CD4MCu	CD4MCu	CD4MCu	17-4 PH S.S.
T4B65-B	4" (100 mm)	1-1/2" (38.1 mm)	CD4MCu	CD4MCu	CD4MCu	17-4 PH S.S.
T6A60-B	6" (150 mm)	3" (76.2 mm)	Ductile Iron	1020 Steel	Gray Iron 30	4140 Alloy Steel
T6A61-B	6" (150 mm)	3" (76.2 mm)	316 S.S.	316 S.S.	316 S.S.	17-4 PH S.S.
T6A65-B	6" (150 mm)	3" (76.2 mm)	CD4MCu	CD4MCu	CD4MCu	17-4 PH S.S.
T6B60-B	6" (150 mm)	1-1/2" (38.1 mm)	Gray Iron	Gray Iron	Gray Iron 30	4140 Alloy Steel
T6B61-B	6" (150 mm)	1-1/2" (38.1 mm)	CD4MCu	CD4MCu	CD4MCu	17-4 PH S.S.
T8A60-B	8" (200 mm)	3" (76.2 mm)	Ductile Iron	Gray Iron	Gray Iron 30	4140 Alloy Steel
T8A61-B	8" (200 mm)	3" (76.2 mm)	316 S.S.	316 S.S.	316 S.S.	17-4 PH S.S.
T8A65-B	8" (200 mm)	3" (76.2 mm)	CD4MCu	CD4MCu	CD4MCu	17-4 PH S.S.
T10A60-B	10" (250 mm)	3" (76.2 mm)	Ductile Iron	120-90-02 Ductile Iron	Gray Iron 30	17-4 PH S.S.
T10A61-B	10" (250 mm)	3" (76.2 mm)	316 S.S.	316 S.S.	316 S.S.	17-4 PH S.S.
T10A65-B	10" (250 mm)	3" (76.2 mm)	CD4MCu	CD4MCu	CD4MCu	17-4 PH S.S.

### Standard Equipment:

- Oil level sight gauge
- Pressure relief valve

### Optional Equipment:

- Air release valve
- Suction & discharge flanged spools
- Casing heaters
- High temperature shut down

### Note:

In addition to the fourteen basic units mentioned on these pages, pumps may on special order be engine powered and mounted on wheels for portability and stand-by use during power failure.

# 3 INCH

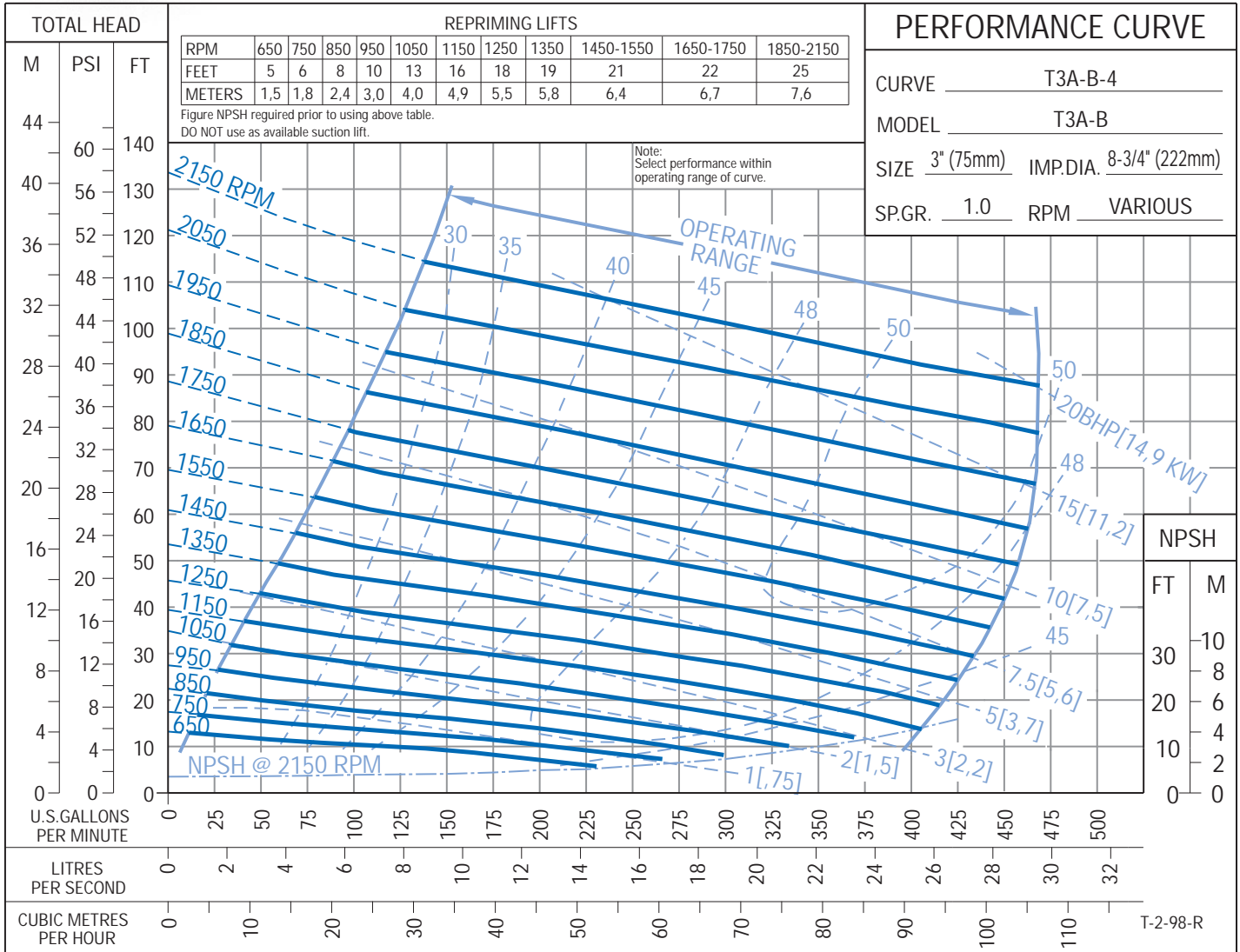
(75 mm)

## Performance Curve



**MODEL T3A60-B**  
**MODEL T3A61-B**  
**MODEL T3A65-B**

Performance as shown has been obtained by pumping 70° clear water. Altitude was corrected to sea level. The pipe and fittings were common in size to pump suction and discharge. Suction pipe incorporated 5' horizontal run from pump to vertical drop into wet well. Individual curves pertaining to the performance of each pump at constant speed, with variable impeller diameter with variable speed for each impeller diameter, are available on request to factory.



3" T Series™ pump handling wastewater at an automotive plant in Ohio, USA.



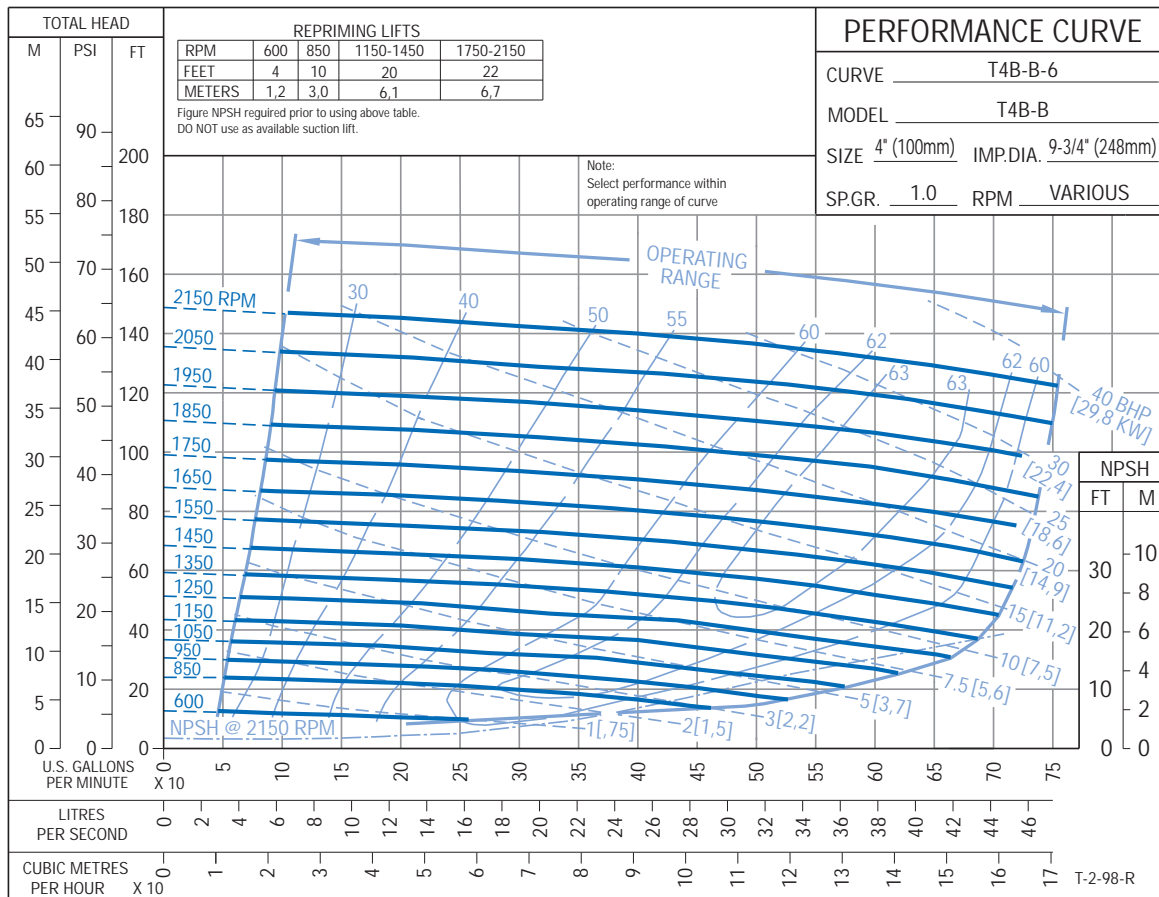
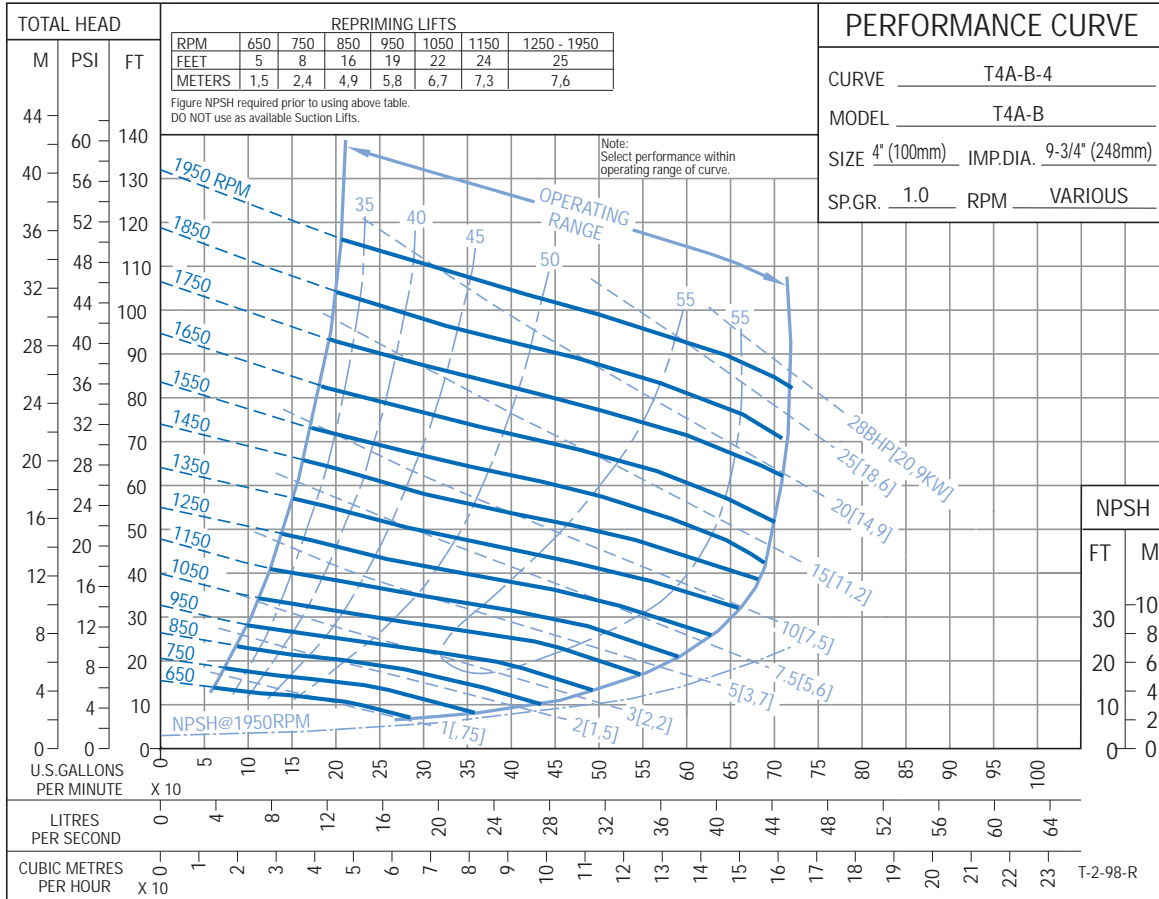
4" T Series™ pump handling corrosive wastewater at a pickling plant in England.



4" T Series™ pump transferring wastewater to a holding tank at a starch plant in Denmark.



**MODEL T4A60-B**  
**MODEL T4A61-B**  
**MODEL T4A65-B**



**MODEL T4B60-B**  
**MODEL T4B61-B**  
**MODEL T4B65-B**



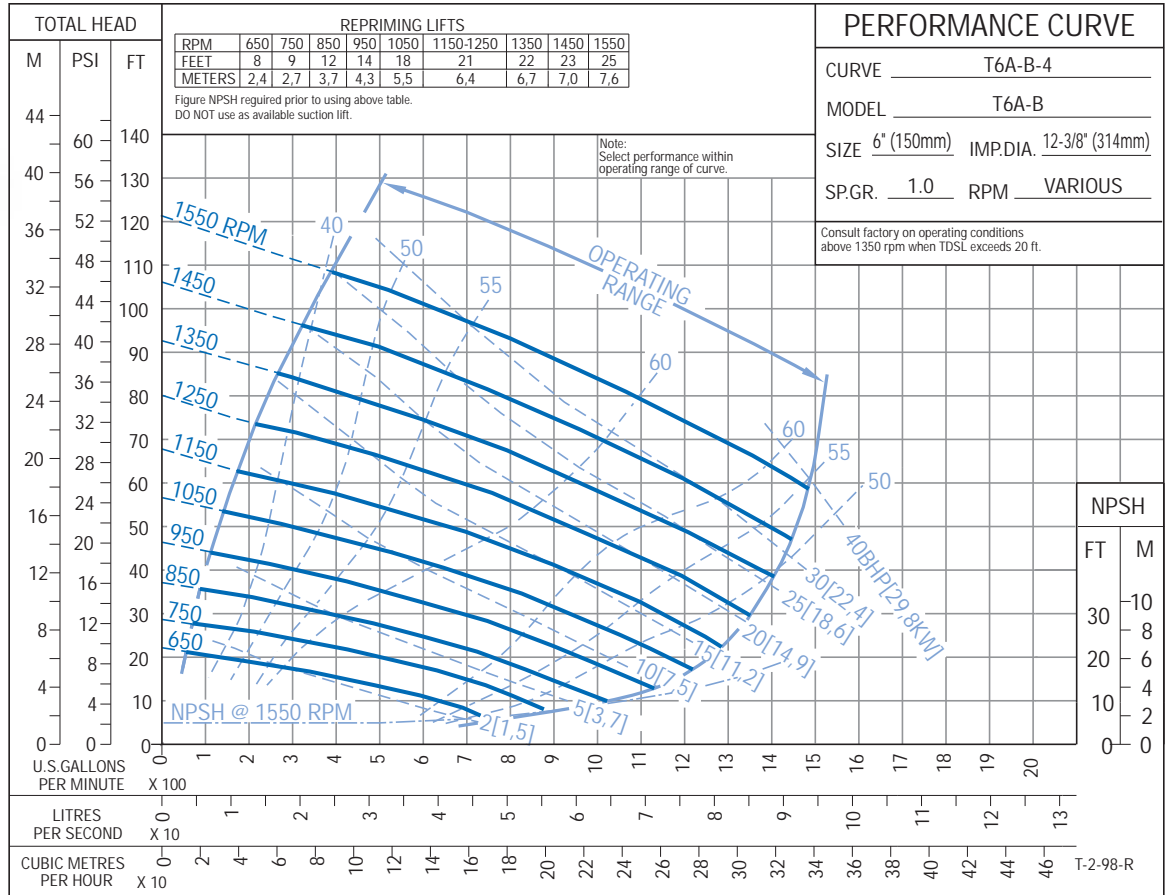
# 6 INCH

(150 mm)

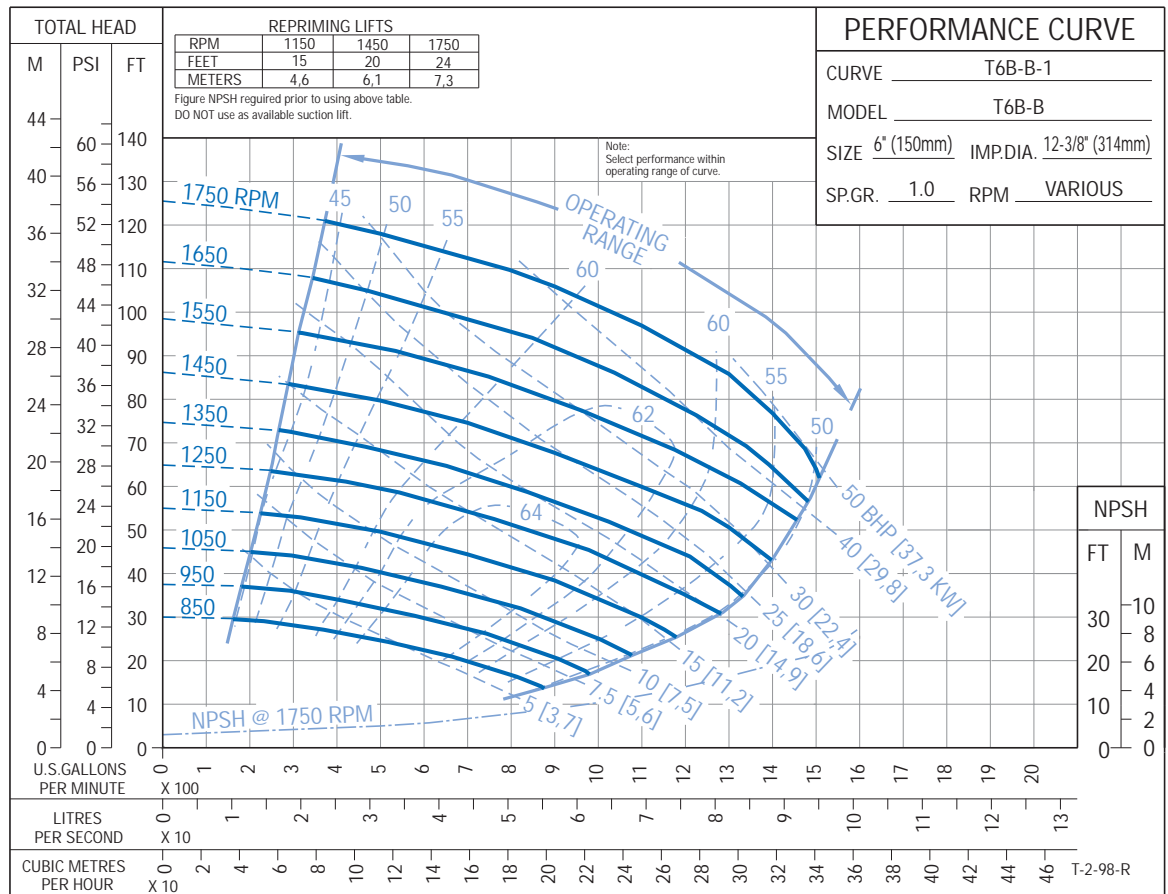
## Performance Curve



**MODEL T6A60-B**  
**MODEL T6A61-B**  
**MODEL T6A65-B**



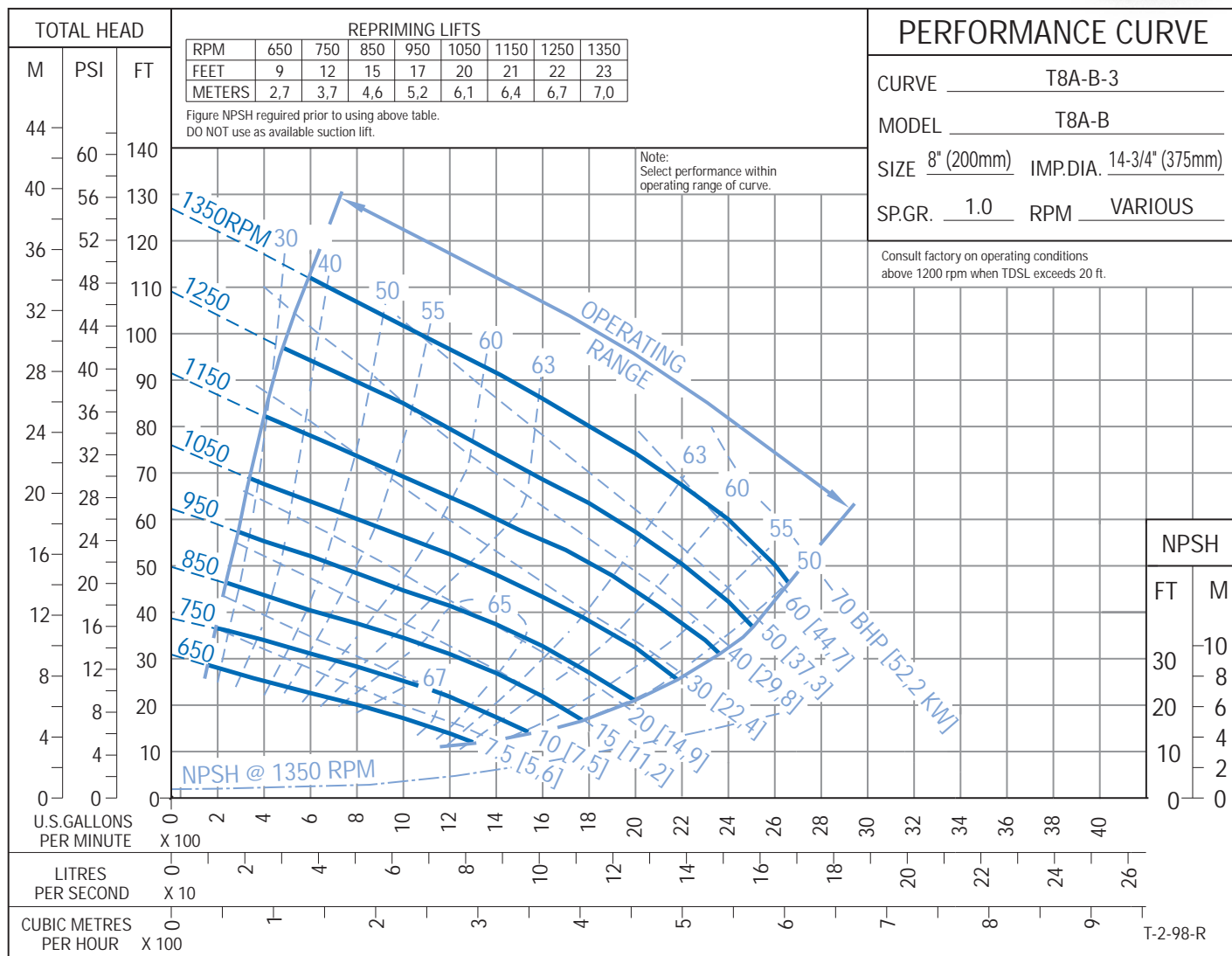
**MODEL T6B60-B**  
**MODEL T6B61-B**







**MODEL T8A60-B**  
**MODEL T8A61-B**  
**MODEL T8A65-B**



6" T Series™ pumping corrosive petroleum wastes at a waste recovery plant in the Netherlands.



6" T Series™ pumps handling solids-laden wastewater at an automotive plant in Michigan, USA.



8" T Series™ pump handling white water at a corrugated plant in Ohio, USA.

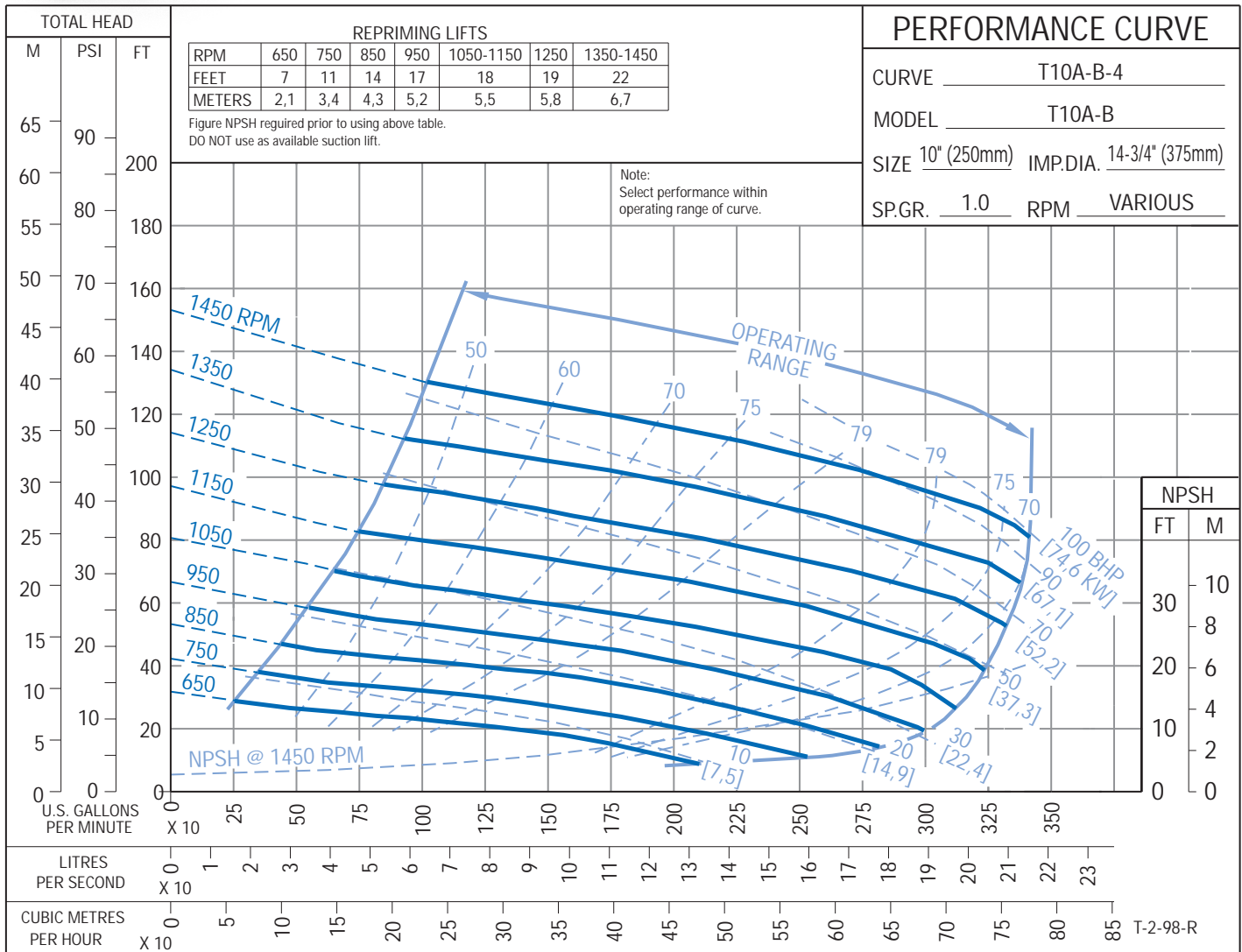
# 10 INCH

(250 mm)

## Performance Curve



**MODEL T10A60-B**  
**MODEL T10A61-B**  
**MODEL T10A65-B**



10" T Series™ pump handling abrasive run-off at an insulation factory in Norway.



10" T Series™ pumps handling sewage at a treatment plant in Denmark.



10" T Series™ pump handling abrasive, solids-laden run-off at a steel mill in Pennsylvania, USA.



## Drive Variations

Gorman-Rupp T Series™ pumps are available as basic units for connection to customers' power or may be flex-coupled or V-belt driven by an electric motor.

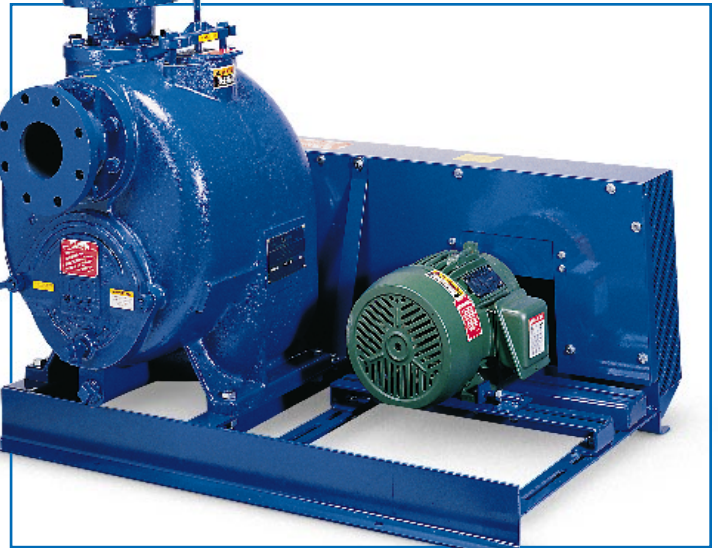
When space is critical, flex-coupling often solves the "tight-fit" problem. V-belt drive offers the advantage of flexibility in speed selection and

usually provides maximum operating speed for required head and capacity without trimming impeller. Belt and sheave configurations are constructed to industry standards and are universally available.

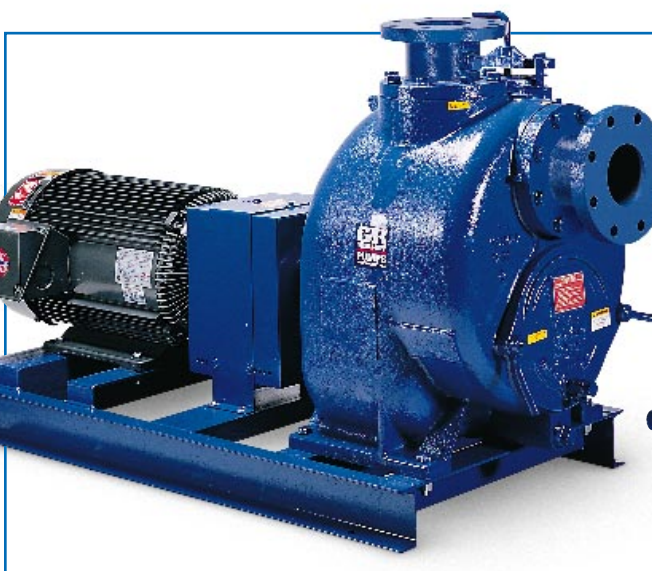
T Series™ pumps may also be powered by gasoline or diesel engines.



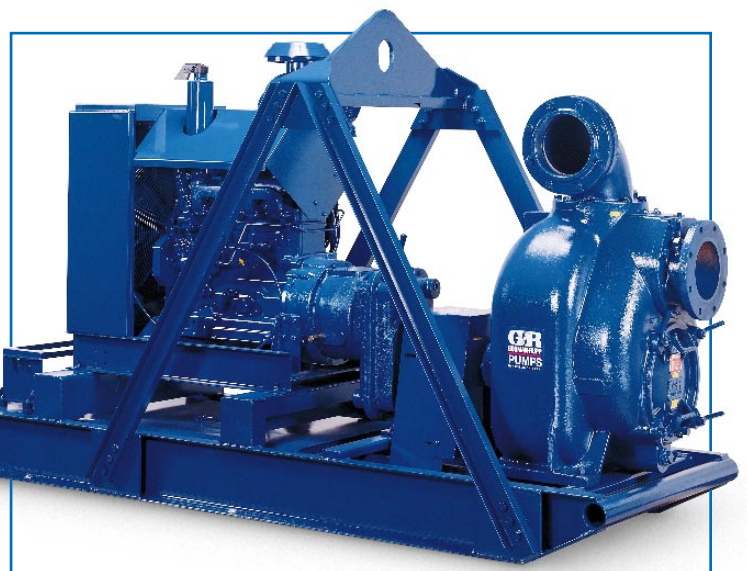
Basic



V-Belt

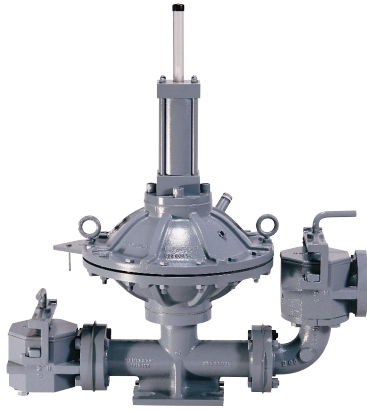


Flexible



Engine Driven

# A complete line of pumps for every industrial application



## Air-Driven Diaphragm - Heavy Sludges and Slurries

Air-driven diaphragm pumps have an extra-thick pump casing for handling heavy sludges and solids. Pumps will handle high solids content up to 70%. Pumps are available in 1-1/2" to 4" (40 mm to 100 mm) sizes, capacities to 170 gpm (11 lbs), heads to 200' (61 m). They will handle up to 3" (76 mm) solids.



## 10 Series® Solids and Corrosive Liquids

10 Series® self-priming pumps have only two moving parts — impeller and shaft, so maintenance problems are minimal. Pumps are available in 1-1/2" to 6" (38 mm to 150 mm) sizes. Capacities to 1300 gpm (82 lbs), heads to 100' (30.5m). Pumps handle up to 2-1/2" (63.5 mm) spherical solids depending on pump model. Multiple seal options available.



## U Series® High Efficiency Solids and Corrosive Liquids

U Series® self-priming pumps are among the most efficient solids handling, self-priming pumps available (up to 75 %). Open, multi-vane impeller will handle solids up to 1-1/4' (31.8 mm) in diameter. Pumps are available in 3", 4" and 6" (75 mm, 100 mm, and 150 mm) sizes, capacities to 1500 gpm (94.6 lbs), heads to 210' (64 m).



## 80 Series® Limited Solids and Corrosive Liquids

80 Series® self-priming pumps are designed for high-efficiency, non-stop workloads. Straight-in suction design allows them to operate on higher suction levels than standard self-priming centrifugals. Pumps are available in 1-1/4" to 8" (30 mm to 200 mm) sizes. Capacities to 2100 gpm (132.5 lbs), heads to 180' (54.9 m). Multiple seal options available.



## 90 Series® Corrosive Liquids and Limited Solids

90 Series® self-priming pumps are specifically designed for applications where limited access is critical. All wearing parts can be quickly replaced using common hand tools. Pumps are available in 2" and 3" (50 mm and 75 mm) sizes. Capacities to 320 gpm (53.4 lbs), heads to 180' (54.9 m). Multiple seal options available.



## 0 Series® Clear Liquids

0 Series® self-priming pumps feature straight-in suction which eliminates entrance restrictions and provides better suction performance when handling solvents, petroleum products and similar liquids. Available in 2" to 6" (50 mm to 150 mm) sizes. Capacities to 1350 gpm (85.2 lbs), heads to 390' (118.9 m).

*The Pump People*™



The Gorman-Rupp Company  
305 Bowman Street, P.O. Box 1217  
Mansfield, Ohio 44901-1217  
419-755-1011  
Fax 419-755-1251

The Gorman-Rupp  
International Company  
P.O. Box 1217  
Mansfield, Ohio 44901-1217  
419-755-1011  
Fax 419-755-1266

[www.gormanrupp.com](http://www.gormanrupp.com)

Gorman-Rupp of Canada, Ltd.  
70 Burwell Road  
St. Thomas, Ontario N5P 3R7  
519-631-2870  
Fax 519-631-4624

